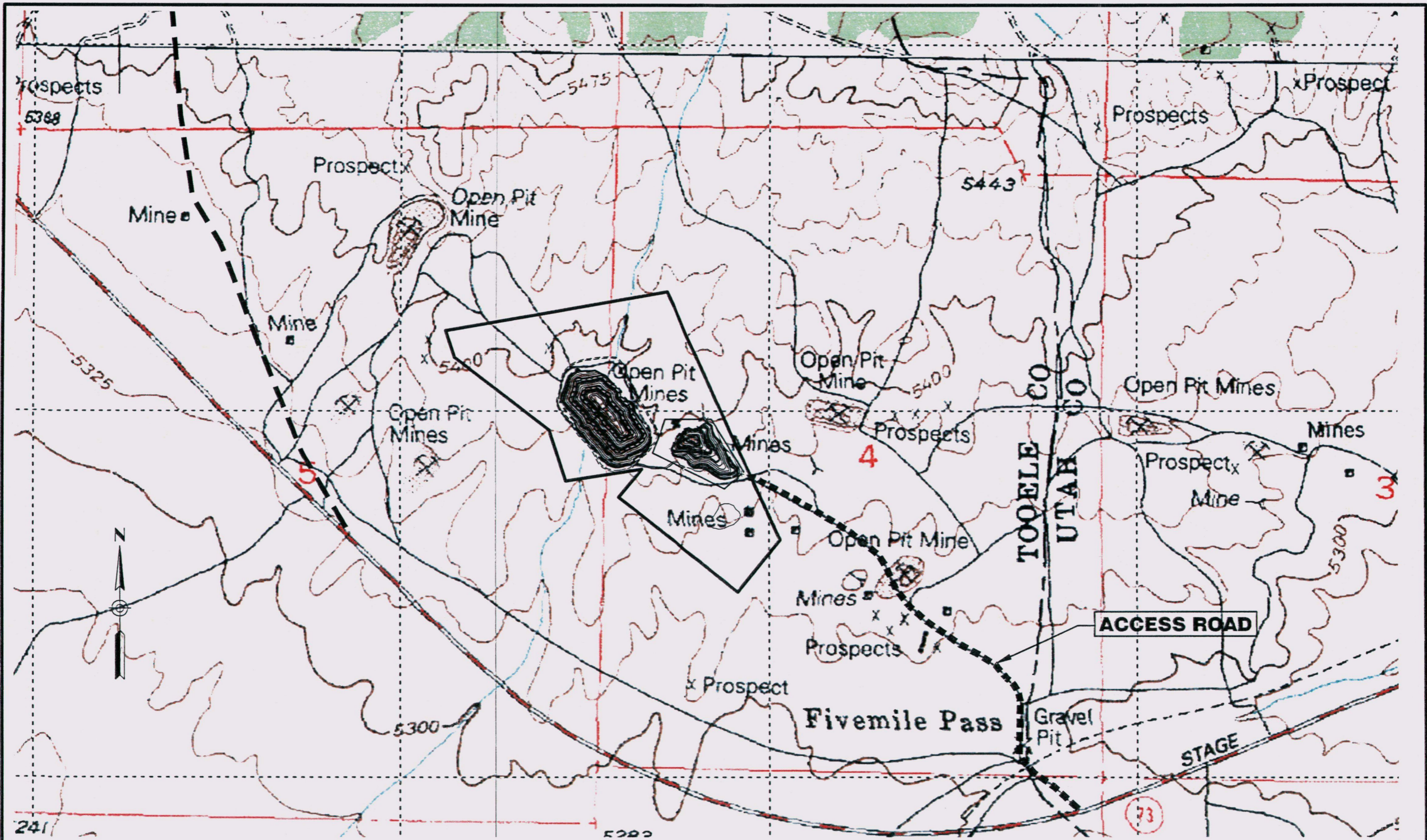


Attachment 1 – Design and Construction

APPENDIX G

Site Maps and Design Details



DESIGN	T. HANSEN				
DRAWN	T. HANSEN				
CHECK	V. HANSEN				
APPROV	V. HANSEN				
		NO.	DATE	REVISION	BY


H&H
 ENGINEERING & SURVEYING, INC.

233 EAST MAIN, SLITE 2
 AMERICAN FORK, UTAH 84003
 TEL: (801) 756-2455
 FAX: (801) 756-3499

PREPARED FOR:
 DCD
 679 NORTH 1500 WEST
 OREM, UTAH 84057
 TEL: (801) 221-9001

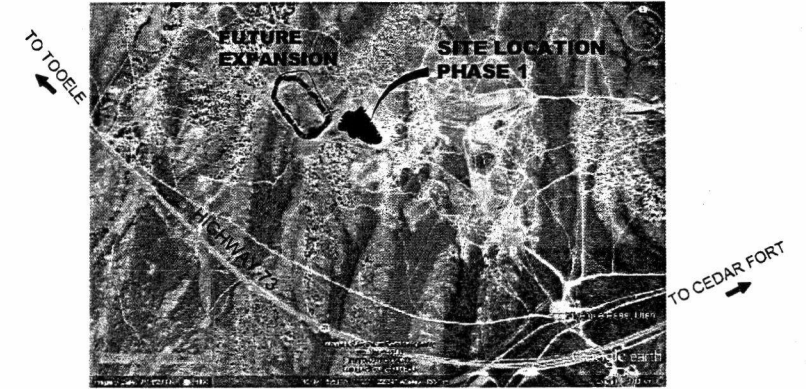
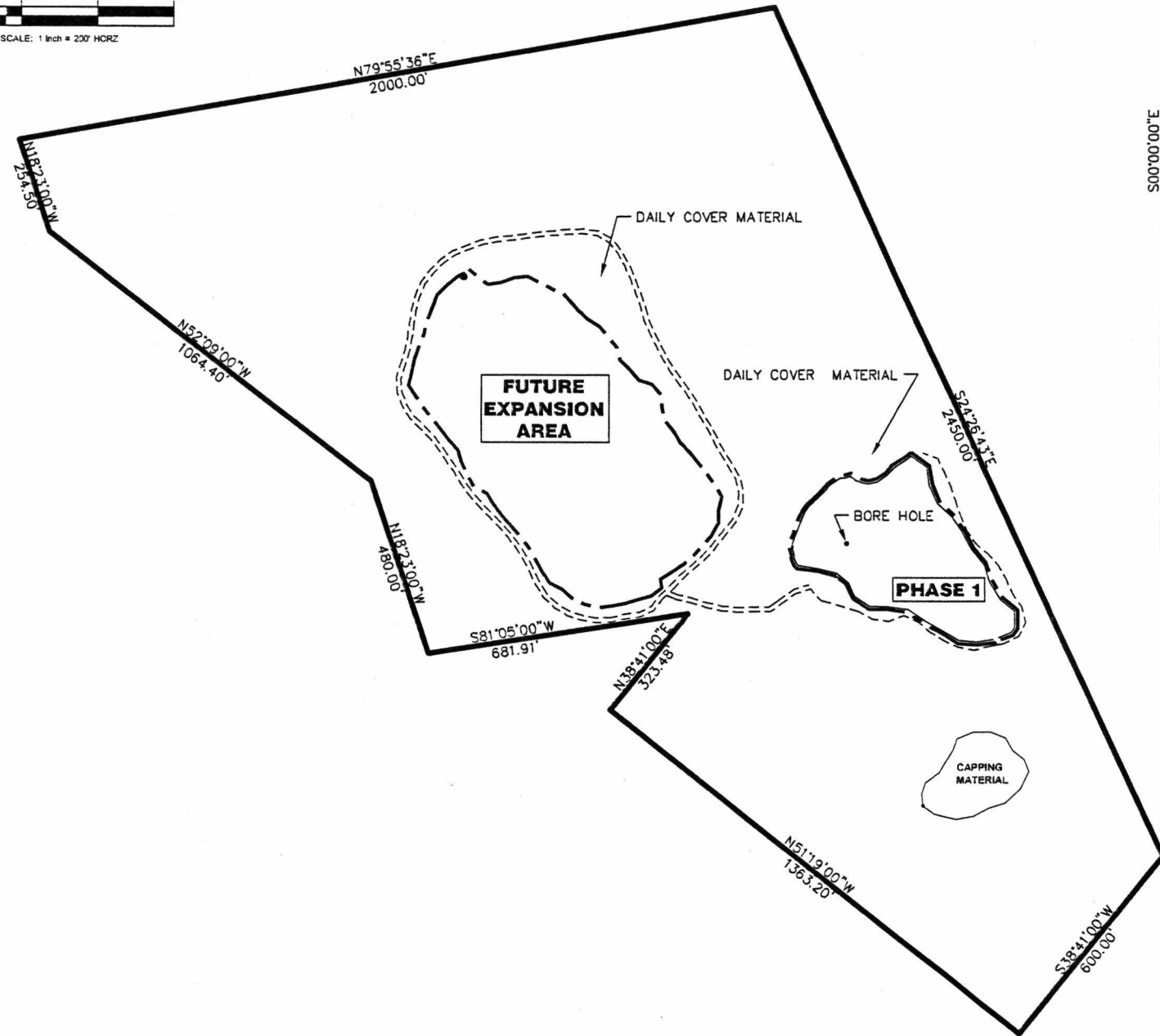
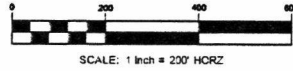
FIVE MILE RECYCLE LANDFILL
 TOOELE, UTAH
 SITE AREA MAP

SHEET	SITE-3
DWG	CONST. PLANS
DATE	OCT 16, 2012
PROJ	12-123-08

NE CORNER SECTION 5,
TOWNSHIP 7 SOUTH,
RANGE 3 WEST, SALT
LAKE BASE AND MERIDIAN

N90°00'00"E
1468.89'

Phase 1 and Phase 2 Completed



VICINITY MAP
NOT TO SCALE

OVERALL SITE BOUNDARY

Beginning at the common corner No. 3 Spotted Fawn Fire Clay, Corner No. 4 Little Roena Fire Clay (4-7015-LS) and Corner No. 1 Little Sam Fire Clay (1-7202-LS), said point being 1468.89 feet East and 3710.43 feet South from the Northeast Corner of Section 5, Township 7 South, Range 3 West, Salt Lake Base and Meridian (Basis of Bearing being South 38 degrees 41 minutes West, a distance of 600 feet between the common Corner No. 3 Spotted Fawn Fire Clay, Corner No. 4 Little Roena Fire Clay (4-7015-LS) and Corner No. 1 Little Sam Fire Clay (1-7202-LS), and corner No 4 Spotted Fawn Fire Clay); running thence along the Southerly line of Spotted Fawn Fire Clay, South 38 degrees 41 minutes 00 seconds West to the Corner No. 4 Spotted Fawn Fire Clay, a distance of 600.0 feet; thence along the Westerly line of Spotted Fawn Fire clay, North 51 degrees 19 minutes 00 seconds West to the Corner No. 1 Spotted Fawn Fire Clay, a distance of 1363.20 feet; thence along the Northerly line of Spotted Fawn Fire Clay, North 38 degrees 41 minutes 00 Seconds East, a distance of 323.485 feet to a point on the southerly line of Sterling; thence along said Southerly line south 81 degrees 05 minutes 00 seconds West, a distance of 681.908 feet to the Corner No. 4 Cincinatti; thence along the Westerly line of Cincinatti North 18 degrees 23 minutes 00 seconds West, a distance of 480.00 feet to the Corner No. 1 Union; thence along the Southerly line of Union, South 81 degrees 05 minutes West a distance of .30 feet to the Corner No. 2 Union, thence along the boundary line of Union, North 52 degrees 09 minutes 00 seconds West, a distance of 1064.40 feet to the Corner No. 3 Union; thence along the Westerly line of Union North 18 degrees 23 minutes 00 seconds West to the Corner No. 3 Union, a distance of 254.50 feet, thence North 79 degrees 55 minutes 36 seconds East 2000.00 feet; thence South 24 degrees 26 minutes 43 seconds East 2450.00 feet to the point of beginning.

Containing 84.064 Acres, or 3,661,808 Square Feet

DESIGN	T. HANSEN
DRAWN	T. HANSEN
CHECK	V. HANSEN
APPRD	V. HANSEN

NO.	DATE	REVISION	BY

VERIFY SCALE
BAR IS ONE INCH IN ORIGINAL DRAWING.
IF NOT ONE INCH ON THIS SHEET, ADJUST SCALES ACCORDINGLY.

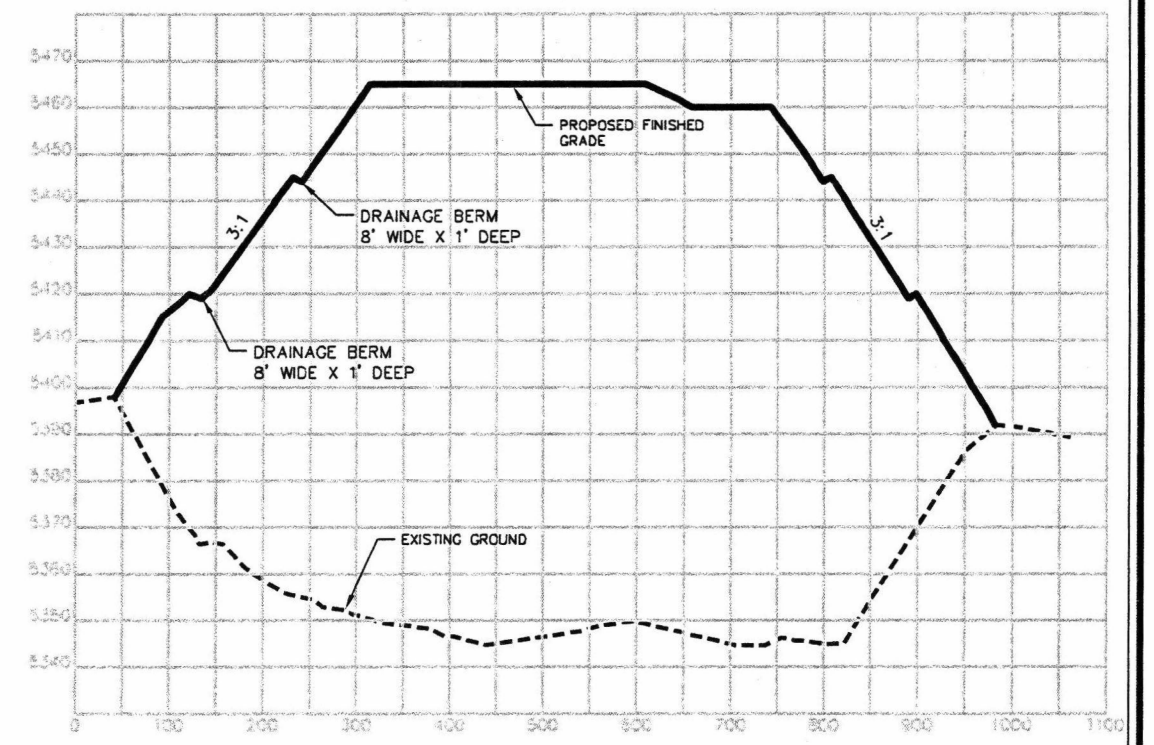
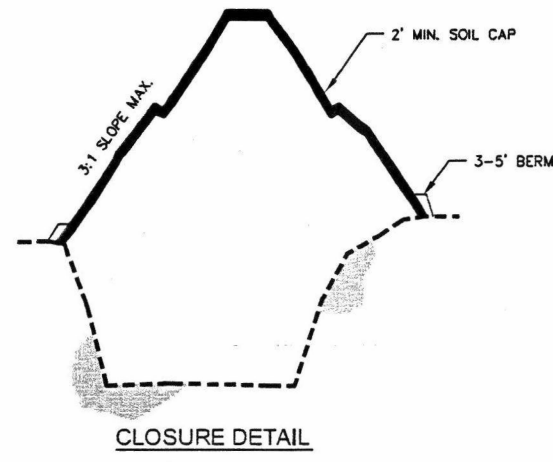
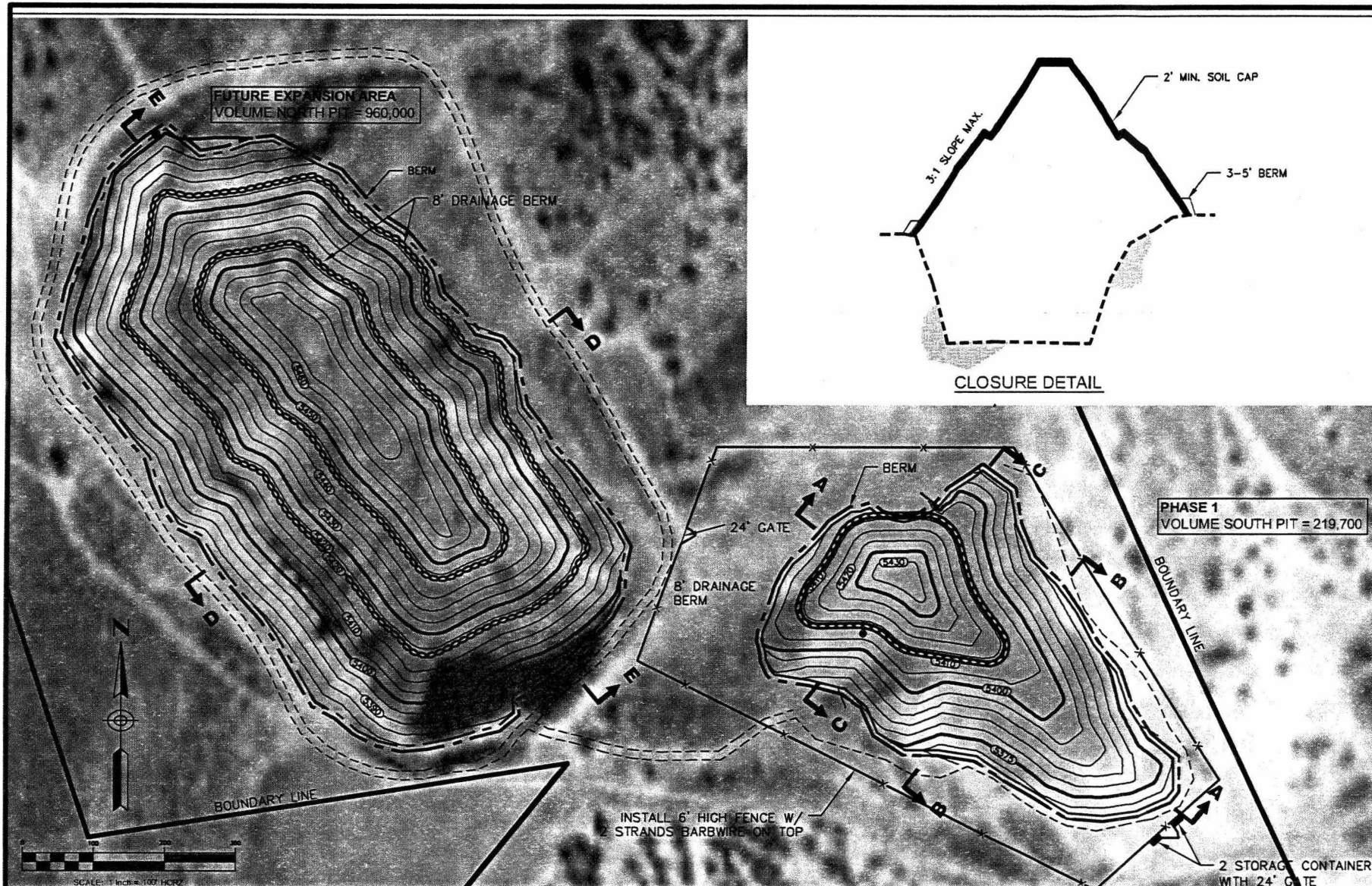
H&H
ENGINEERING & SURVEYING, INC.

233 EAST MAIN, SLITE 2
AMERICAN FORK, UTAH 84003
TEL: (801) 756-2488
FAX: (801) 756-3499

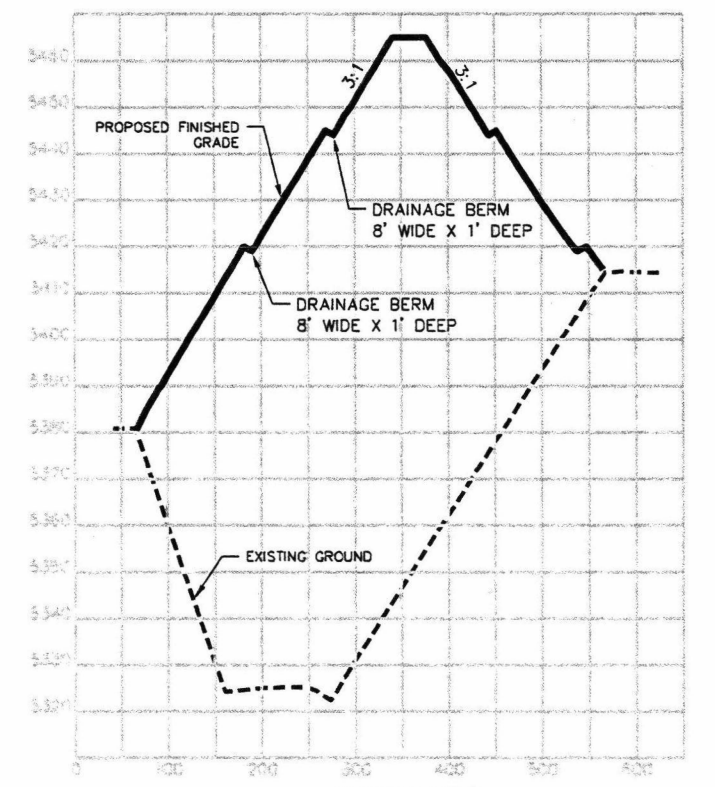
PREPARED FOR:
DUNN CONSTRUCTION
679 NORTH 1500 WEST
OREM, UTAH 84057
TEL: (801) 221-9001

FIVE MILE RECYCLE LANDFILL
TOOELE, UTAH
OVERALL SITE BOUNDARY

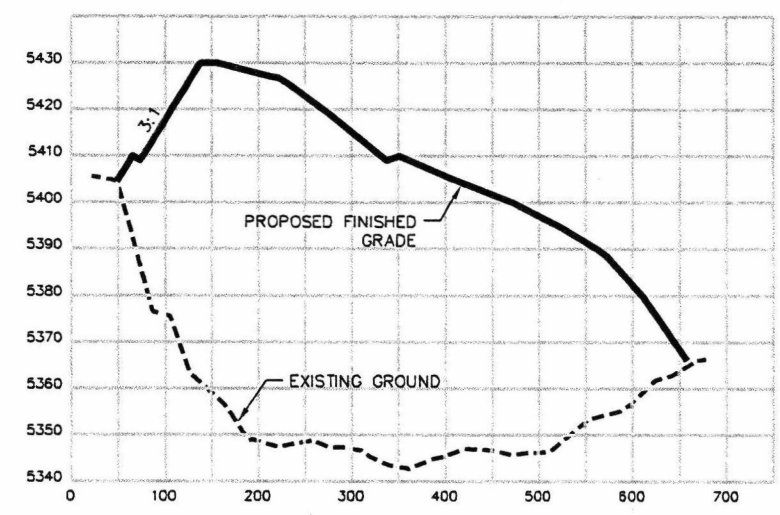
SHEET	SITE-1
DWG	CONST. PLANS
DATE	OCT 16, 2012
PROJ	12-123-08



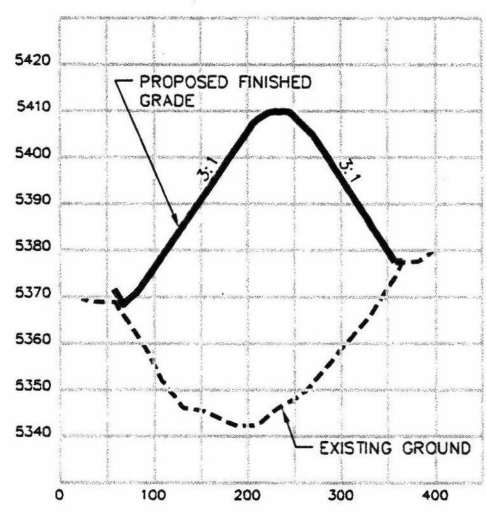
SECTION E-E



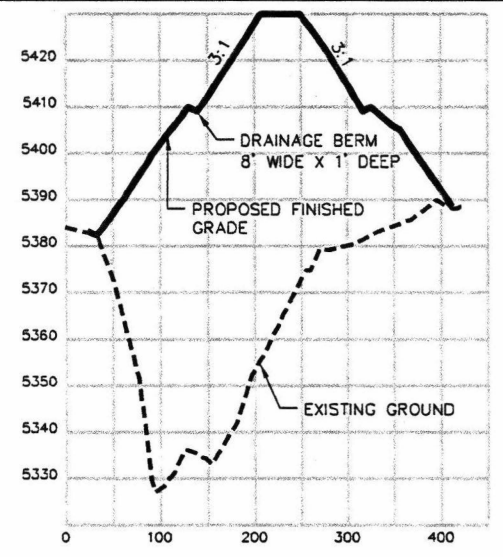
SECTION D-D



SECTION A-A



SECTION B-B



SECTION C-C

DESIGN	T HANSEN	NO.	DATE	REVISION	BY
DRAWN	T HANSEN				
CHECK	V HANSEN				
APRVD	V HANSEN				

VERIFY SCALE
 BAR IS ONE INCH IN ORIGINAL DRAWING.
 IF NOT ONE INCH ON THIS SHEET, ADJUST SCALES ACCORDINGLY

H&H
 ENGINEERING & SURVEYING, INC.

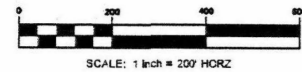
233 EAST MAIN, SLITE 2
 AMERICAN FORK, UTAH 84005
 TEL: (801) 756-2498
 FAX: (801) 756-3499

PREPARED FOR:
 DCD
 679 NORTH 1500 WEST
 OREM, UTAH 84057
 TEL: (801) 221-9001

FIVE MILE RECYCLE LANDFILL
 TOOELE, UTAH

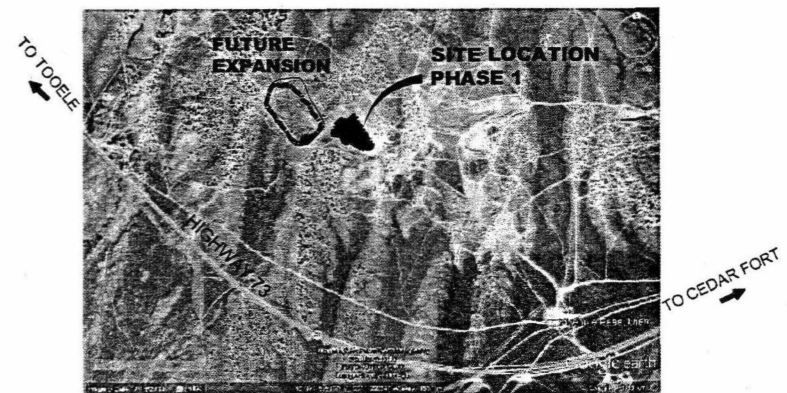
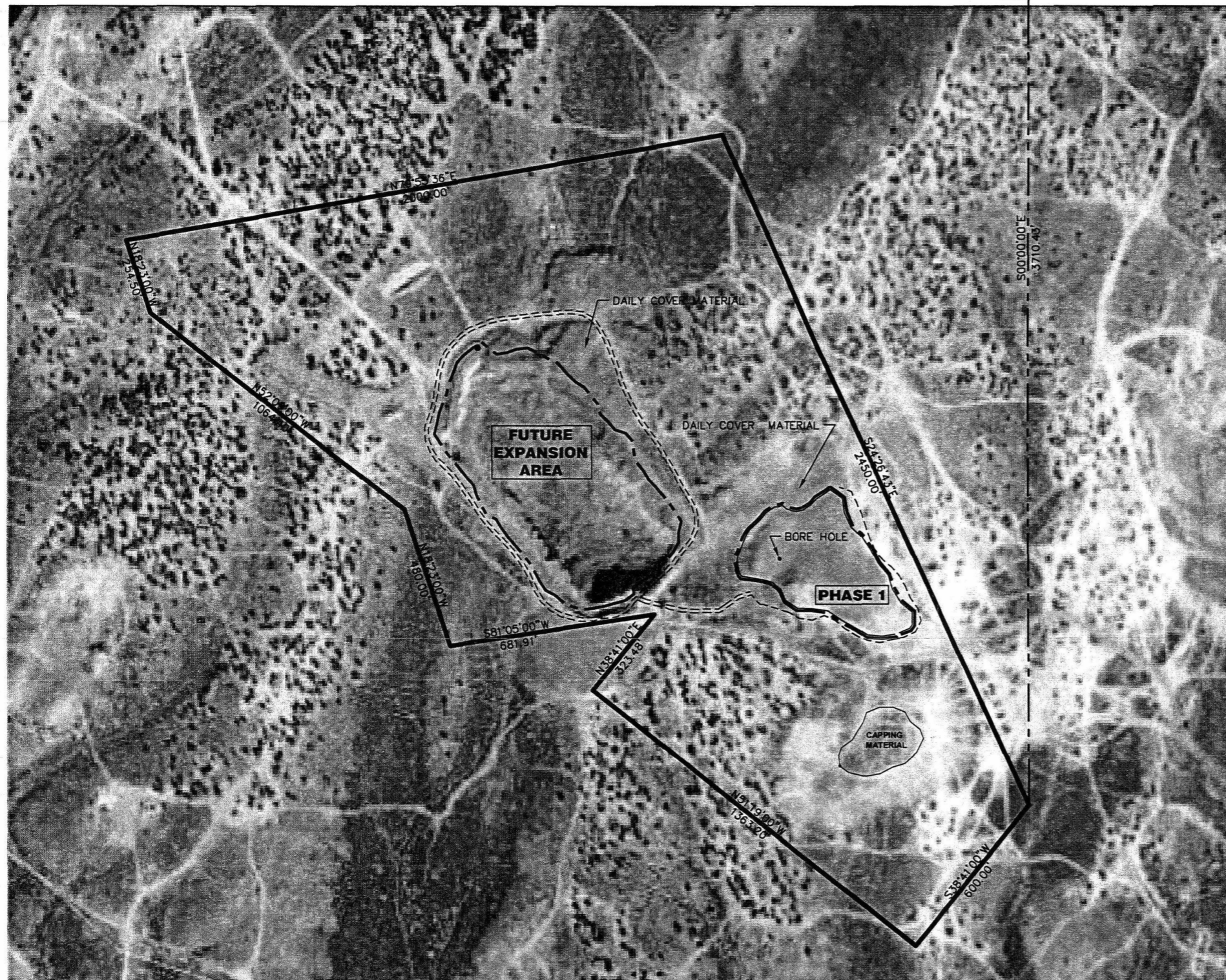
SECTIONS

SHEET	SITE-2
DWG	CONST. PLANS
DATE	OCT 16, 2012
PROJ	12-123-08



NE CORNER SECTION 5,
TOWNSHIP 7 SOUTH,
RANGE 3 WEST, SALT
LAKE BASE AND MERIDIAN

N90°00'00"E
1468.89'



VICINITY MAP
NOT TO SCALE



OVERALL SITE BOUNDARY

Beginning at the common corner No. 3 Spotted Fawn Fire Clay, Corner No. 4 Little Roena Fire Clay (4-7015-LS) and Corner No. 1 Little Sam Fire Clay (1-7202-LS), said point being 1468.89 feet East and 3710.43 feet South from the Northeast Corner of Section 5, Township 7 South, Range 3 West, Salt Lake Base and Meridian (Basis of Bearing being South 38 degrees 41 minutes West, a distance of 600 feet between the common Corner No. 3 Spotted Fawn Fire Clay, Corner No. 4 Little Roena Fire Clay (4-7015-LS) and Corner No. 1 Little Sam Fire Clay (1-7202-LS), and corner No 4 Spotted Fawn Fire Clay); running thence along the Southerly line of Spotted Fawn Fire Clay, South 38 degrees 41 minutes 00 seconds West to the Corner No. 4 Spotted Fawn Fire Clay, a distance of 600.0 feet; thence along the Westerly line of Spotted Fawn Fire clay, North 51 degrees 19 minutes 00 seconds West to the Corner No. 1 Spotted Fawn Fire Clay, a distance of 1363.20 feet; thence along the Northerly line of Spotted Fawn Fire Clay, North 38 degrees 41 minutes 00 Seconds East, a distance of 323.485 feet to a point on the southerly line of Sterling; thence along said Southerly line south 81 degrees 05 minutes 00 seconds West, a distance of 681.908 feet to the Corner No. 4 Cincinnati; thence along the Westerly line of Cincinnati North 18 degrees 23 minutes 00 seconds West, a distance of 480.00 feet to the Corner No. 1 Union; thence along the Southerly line of Union, South 81 degrees 05 minutes West a distance of .30 feet to the Corner No. 2 Union, thence along the boundary line of Union, North 52 degrees 09 minutes 00 seconds West, a distance of 1064.40 feet to the Corner No. 3 Union; thence along the Westerly line of Union North 18 degrees 23 minutes 00 seconds West to the Corner No. 3 Union, a distance of 254.50 feet, thence North 79 degrees 55 minutes 36 seconds East 2000.00 feet; thence South 24 degrees 26 minutes 43 seconds East 2450.00 feet to the point of beginning.
Containing 84.064 Acres, or 3,661,808 Square Feet

DESIGN	T HANSEN
DRAWN	T HANSEN
CHECK	V HANSEN
APRVD	V HANSEN

NO.	DATE	REVISION	BY

VERIFY SCALE
BAR IS ONE INCH IN ORIGINAL DRAWING.
IF NOT ONE INCH ON THIS SHEET, ADJUST SCALES ACCORDINGLY

H&H
ENGINEERING & SURVEYING, INC.

233 EAST MAIN, SUITE 2
AMERICAN FORK, UTAH 84003
TEL: (801) 756-2488
FAX: (801) 756-3499

PREPARED FOR:
DCD
679 NORTH 1500 WEST
OREM, UTAH 84057
TEL: (801) 221-9001

FIVE MILE RECYCLE LANDFILL
TOOELE, UTAH

OVERALL SITE BOUNDARY

SHEET	SITE-1
DWG	CONST. PLANS
DATE	OCT 16, 2012
PROJ	12-123-08

Phase 2A - Revised Phase 2

Below (Figure 3) shows the Phase 2A currently being filled and approaching capacity. Currently the cap is 95% complete.



Figure 3- Phase 2A

Master Plan for Future Expansion

The exhibit below (Figure 2) is a phasing plan for future expansions. Phase 1 Cell (closed) is to be enveloped by Phase 3 in the future.

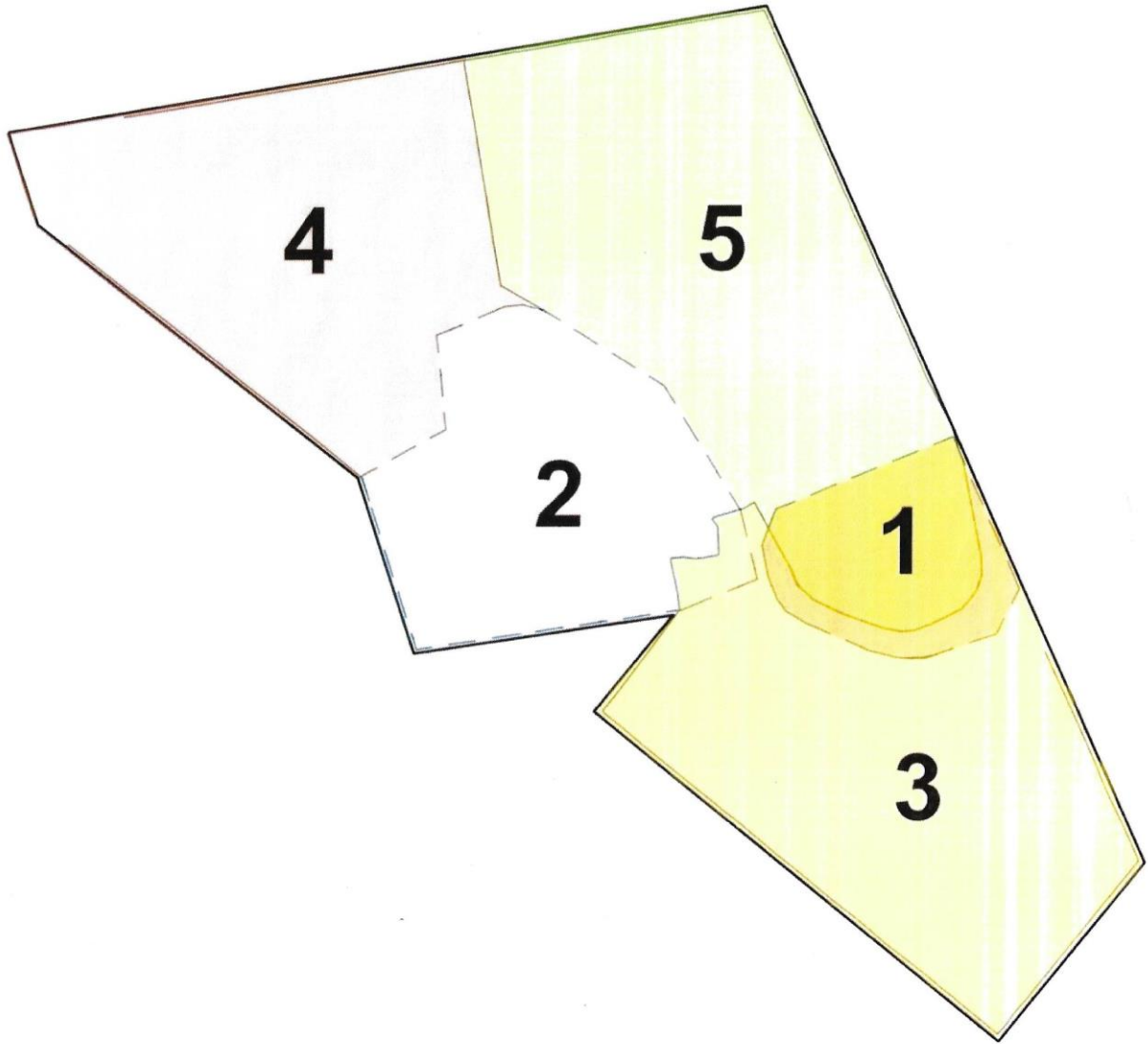


Figure 2 - Master Phasing Plan

Phase 3A – Plan and Cross Section

Current Phase

Phase 3A (Figure 4) will increase the trash capacity by approximately 635,000 cubic yards of additional storage.

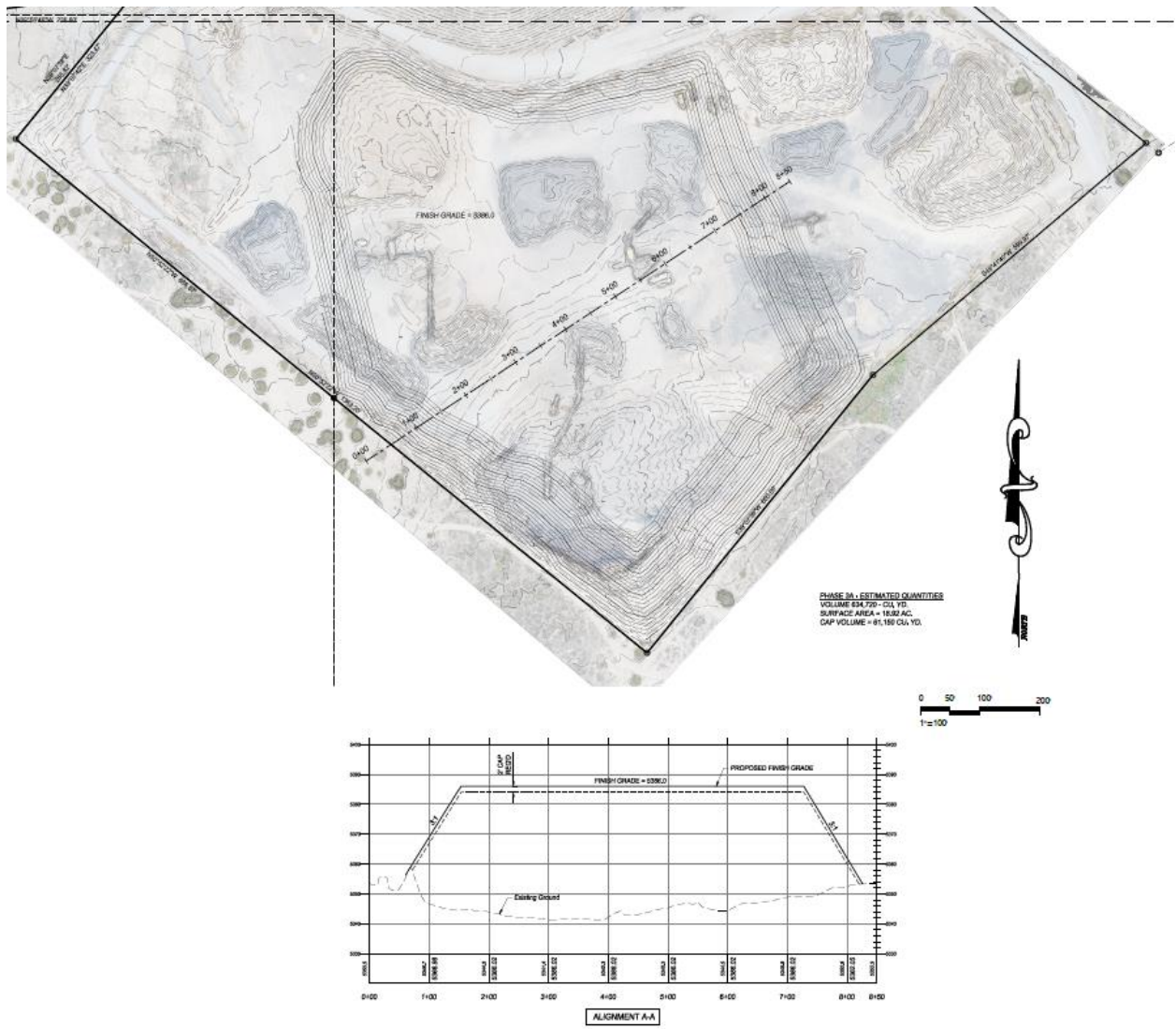
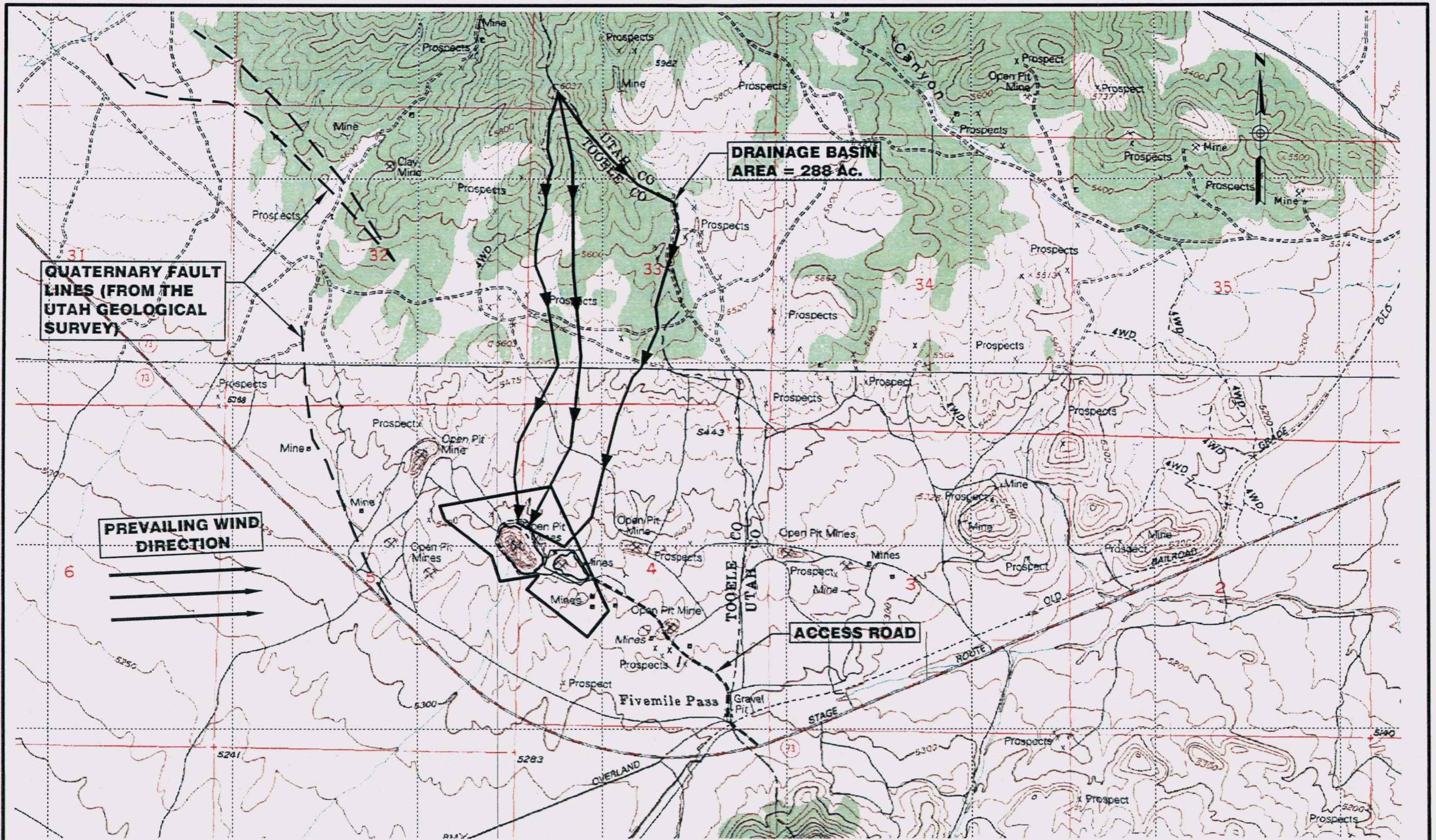


Figure 4 - Phase 3A Plan and Cross Section View



DESIGN	T. HANSEN				
DRAWN	T. HANSEN				
CHECK	V. HANSEN				
APPROV	V. HANSEN				
NO.	DATE	REVISION	BY		

H&H
ENGINEERING & SURVEYING, INC.

233 EAST MAIN, SUITE 2
AMERICAN FORK, UTAH 84003
TEL: (801) 756-2486
FAX: (801) 756-3499

PREPARED FOR:
DCD
679 NORTH 1500 WEST
OREM, UTAH 84057
TEL: (801) 221-9001

FIVE MILE RECYCLE LANDFILL
TOOELE, UTAH
FAULT LINES / WIND / DRAINAGE

SHEET	SITE-3
DWG	CONST. PLANS
DATE	OCT 16, 2012
PROJ	12-123-08